

Kids--e-Dental[®]

**product
catalogue**



Content

Preventive

e-SDF (38% Silver diamine fluoride)

Pediatric Crown

Kids-e-Crown (Preformed zirconia crowns)

Bioflx Crown (Preformed esthetic flexible crowns)

Endodontics

e-MTA (Mineral trioxide aggregate)

e-MTA Putty (Pre-mixed mineral trioxide aggregate)

e-MTA Carrier (Mineral trioxide aggregate carrier)

e-MTA Sealer (Bioceramic sealer)

e-IodoCal (Calcium hydroxide paste with iodoform)

Preventive Orthodontic

e-Space Maintainer (Preformed space maintainer)

Splints

e-Splint (Esthetic fiber reinforced splint)

Company Profile

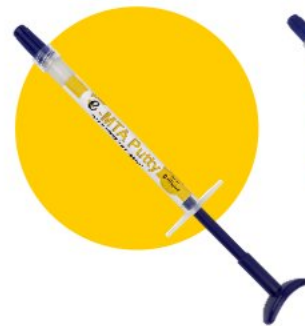
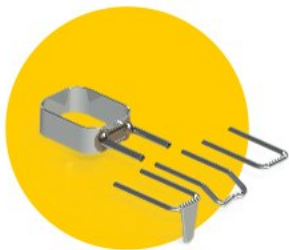
Kids-e-Dental LLP, founded in 2017, is exclusively dedicated to develop and innovate world class quality dental products for children.

Our mission is to promote dental health of children with parents satisfaction at the same time provide quality dental products to dentist at best prices.

All the products are research based and passionately made by best professionals in the world using the best technology.

We believe in high quality standards and customer service.

Kids--Dental[®]



EFFECTIVE

ECONOMICAL



EASY TO USE

EFFICIENT



Preventive Dentistry



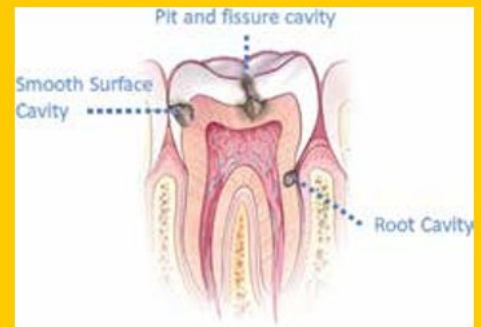
what is silver diamine fluoride ?

Silver Diamine Fluoride (SDF) is a liquid substance used to help prevent caries from forming, growing, or spreading to other teeth. Its safe, painless alternative to traditional cavity drilling procedures.

Silver Diamine Fluoride (SDF) was first approved for use in Japan more than 80 years ago. SDF was approved by U.S. Food and Drug Administration (FDA) in 2014 for use in the United States.

INDICATIONS

- 🦷 Non-symptomatic carious lesion (Arresting and preventing caries)
- 🦷 Carious lesions that cannot be treated in 1 visit
- 🦷 Root caries
- 🦷 Tooth sensitivity
- 🦷 Difficult to treat lesions
- 🦷 Patients with special health care needs, severe dental phobia, high risk conditions and immune-compromised patients
- 🦷 Patients without access to traditional dental care.
- 🦷 Patients not indicated for general anesthesia or oral sedation
- 🦷 Indirect pulp capping



uses in general dentistry

- Useful for un-cooperative and anxious patients
- Treatment of hypersensitivity
- Control of vital tooth preparation hypersensitivity
- Indirect pulp capping
- Difficult to reach lesion like root caries and 3rd molars

benefits

- **PAINLESS:** No anesthesia required
- **NON-INVASIVE:** No drilling required
- **TIME SAVING:** Easy to use
- **1 DROP** = upto 5 surfaces
- **3.25 ML BOTTLE** can cater 100 to 130 patients

clinical case studies



PRE-OPERATIVE



CARIES ARREST



GIC FILLING



doctors' review



Dr. Yasmin Kottait DDS, MSc in Pediatric Dentistry
Owner, Dr. Yasmin Kottait Clinic, Dubai

e-SDF is a magical liquid for pediatric dentistry and very useful for un-cooperative and special children. It is a gold standard and highly effective agent for non-invasive dentistry



Dr. Mostafa Nabil Hamid,
Assistant Researcher of Pediatric Dentistry,
National Research Center,
Cairo Egypt.

E-sdf was a game changer during the last two years . lots of successful cases and happy children with no invasive approach.



Pediatric Crowns



about Kids-e-Crown®

Kids-e-Crown® are world's first smart pediatric crowns. The smart design of the crown satisfy the clinical needs of the dentist, making their work easy and fast. We use the best technology and raw materials to manufacture the crowns under strict quality control.

Kids-e-Crown® aesthetics are well accepted and appreciated by children and their parents.



material selection

WHY ZIRCONIA?

Also known as Zirconium Dioxide (ZrO_2)

Its been used in Dentistry and other medical applications like hip-replacement because of its unique properties.



HIGH STRENGTH

Load bearing
1200 MPa



CHEMICAL RESISTANT

Chemical
Stable



WEAR RESISTANT

High Resistance
to wear and tear



BIO COMPATIBLE

Highly Bio
Compatible

unique design

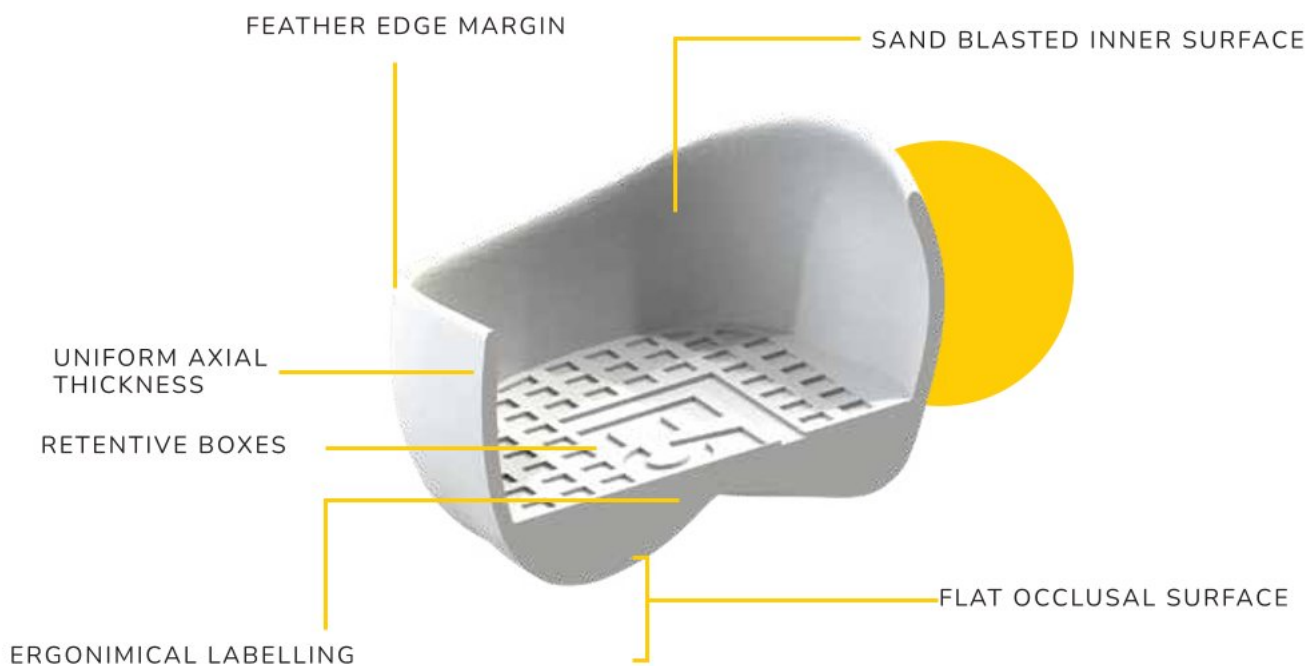
Kids-e-Crown® has some unique design features in anterior and posterior crowns.



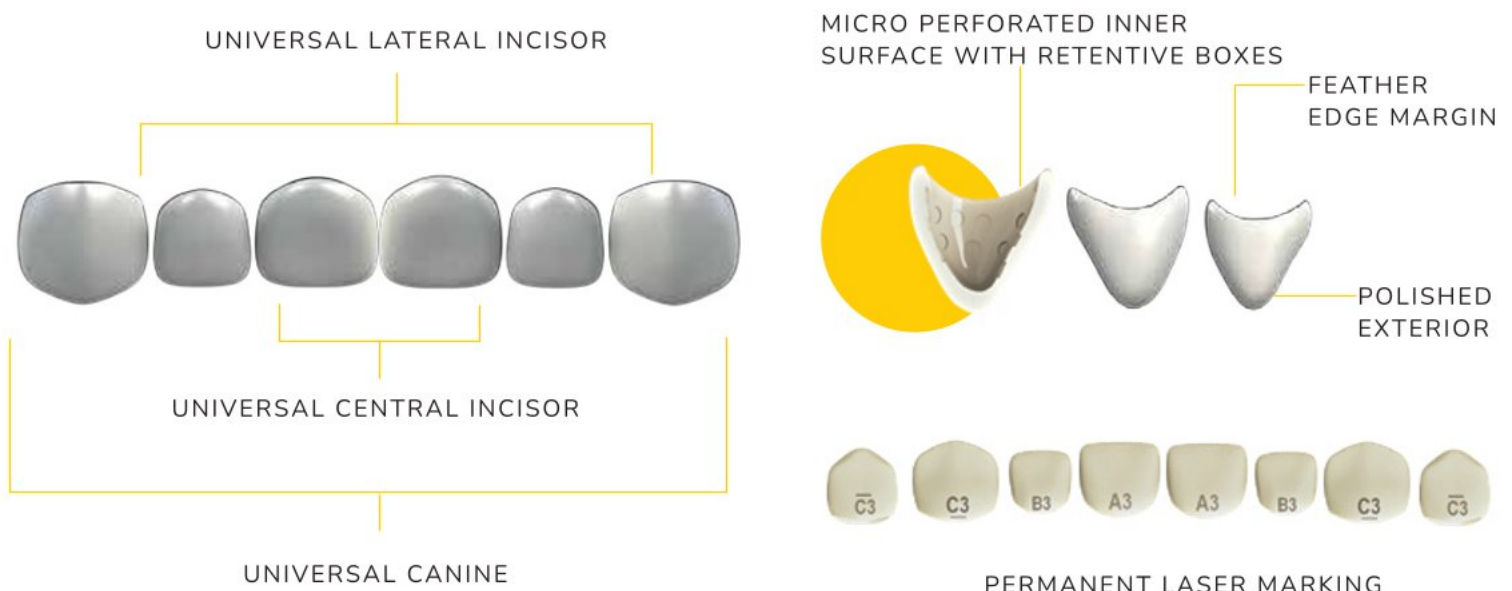
Regular Crown

Narrow Crown

posterior design



anterior design



about *Bioflx* Crown

Bioflx crowns are world's first flexible, durable, self adaptable and esthetic pre formed pediatric crowns which offer properties of both stainless steel crowns and zirconia crowns.



material composition

Made up of high impact hybrid resin polymer used in the medical field requiring high strength, flexibility and durability. They are metal and Bis-GMA free.



FLEXIBLE

Distinctively flexible & versatile nature



DURABLE

Great deal of resistance & endurance



ESTHETIC

Metal free tooth colored natural looking crown



SELF ADAPTABLE

Self adapts to new occlusion

unique design

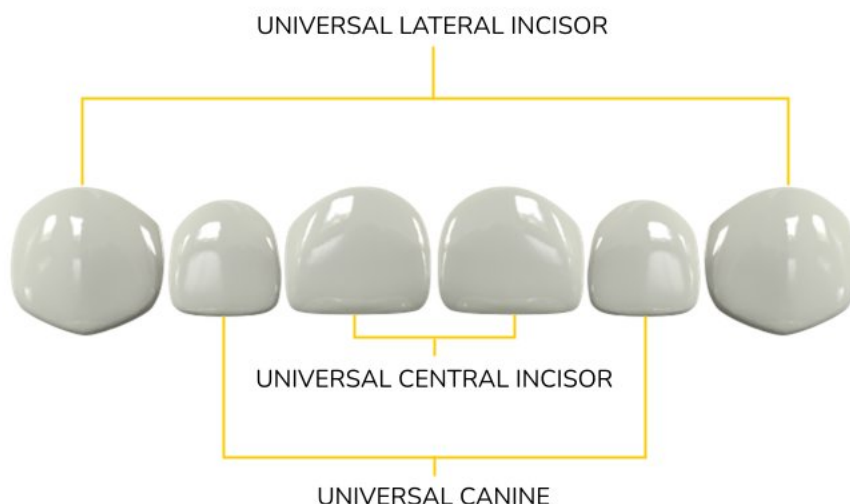
Bioflx crowns has some unique design features in anterior and posterior crowns.



posterior design



anterior design





Endodontics



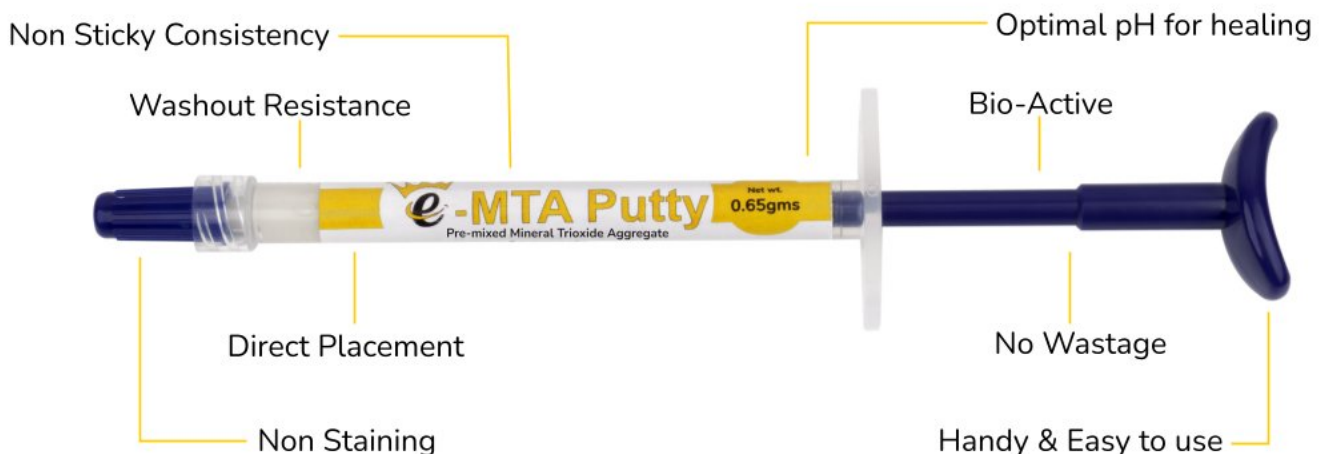
about e-MTA® & e-MTA Putty

e-MTA® (Mineral trioxide aggregate) is a bioactive cement consisting of very fine hydrophilic particles of several mineral oxides.



- 🦷 **BIO-ACTIVE**
- 🦷 **WASHOUT RESISTANT**
- 🦷 **QUICK SETTING**
- 🦷 **SMART PACKAGING**
- 🦷 **GEL BASED TECHNOLOGY**

e-MTA Putty is a pre-mixed bio-ceramic, insoluble, radiopaque and bioactive paste consisting of very fine hydrophilic particles of several mineral oxides.

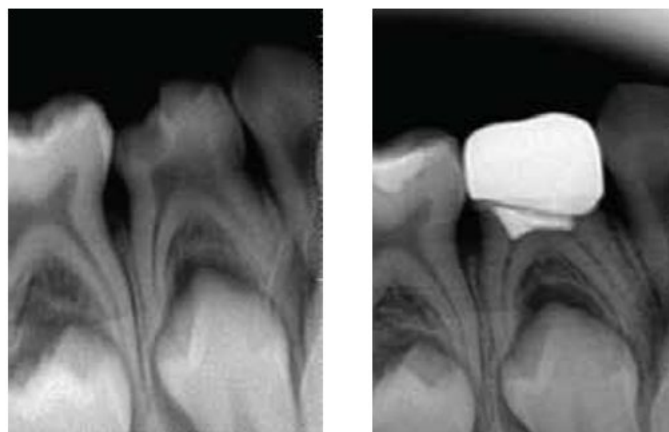


Indications



clinical case studies

Case of e-MTA® Pulpotomy in Primary teeth



Case of e-MTA® Apexification in Permanent teeth by Dr.Mayur Bhattad



PRE-OPERATIVE

WORKING LENGTH
ESTIMATION

MTA CONDENSER

MTA IN
APICAL REGION

POST-OPERATIVE

Adverse Reaction

➤ No contra-indications and side effects known.

doctors' review



Dr Mayur Bhattad, M.D.S(Pediatric and preventive dentistry)
Chief Pediatric Dentist at Happy tooth Laser Dental Clinic,
Nanded Maharashtra, India

KIDS - E MTA is very economical and biocompatible material. I am using it since last 3 years in various Vital and Non vital pulp therapies. I have found excellent and successfull result on follow up

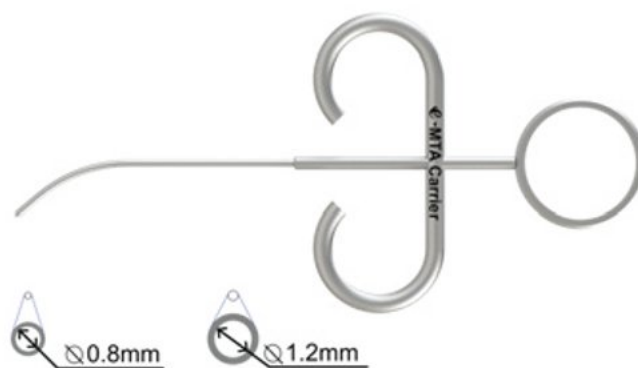
- MTA Carrier

e-MTA Carrier has been designed to dispense MTA at the designated site of operation, with ease of handling. From internal perforation repairs to root end fillings, it's used for a wide range of clinical MTA procedures.



Characteristic feature of e-MTA carrier:

- **Curved tip** that allows for easy loading of the material at the root canal orifice.
- **Autoclavable**
- **316 L surgical grade** stainless steel used for high strength.
- Available in diameters of **0.8mm** and **1.2mm**.



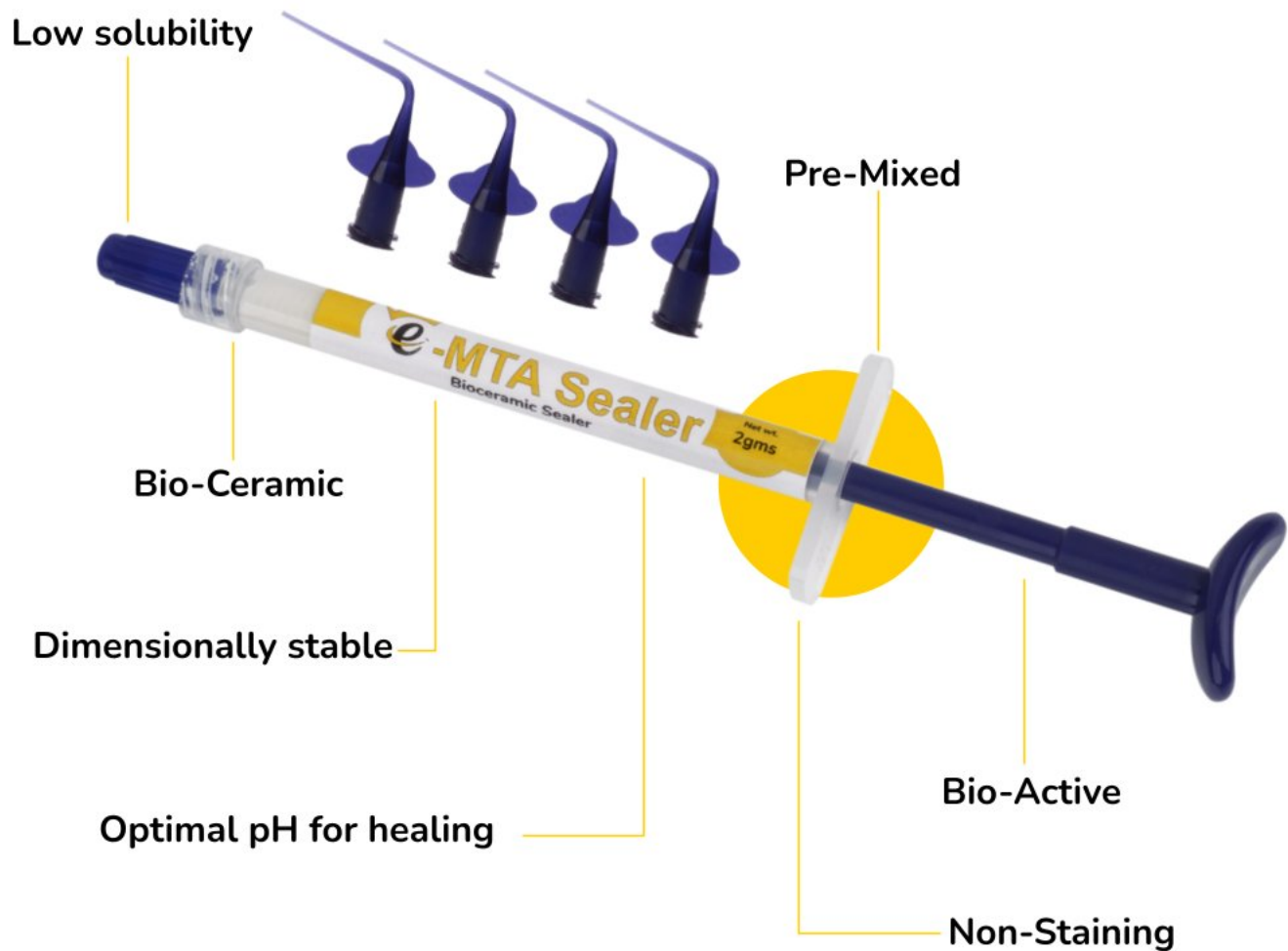
Available in two sizes

Benefits

- e-MTA carrier reduces the amount of MTA waste
- Eliminates the need to clean the cavity walls
- Accurate placement at desired site
- Ease of use.

about e-MTA Sealer

e-MTA sealer is a pre-mixed bio-ceramic, insoluble, radiopaque and bioactive sealer consisting of very fine hydrophilic particles of several mineral oxides.



Indications

Root Canal obturation and sealing

PRO AF BABY GOLD

Pediatric Rotary Files

01

Best Quality
Pediatric Rotary
Files

02

Most
Economical
Pediatric Files

03

Designed by a
Pedodontist

04

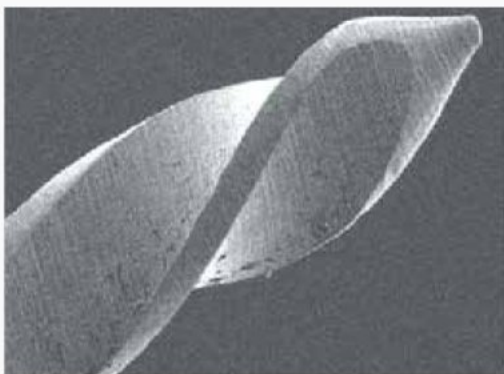
Free
Autoclavable
Box

05

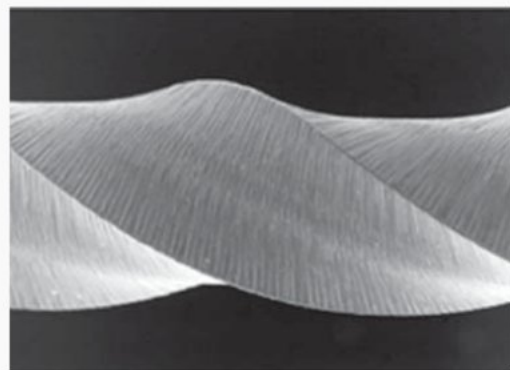
Used by
Dentists
Worldwide

salient features

- Short 17mm file improving safety with comfort to both dentist and the patient
- Advanced NiTi CM wire for better canal centricity unlike NiTi file.
- Heat Treatment resulting nearly no separation
- A versatile rotary file system suitable for conservative preparation of all types of canals.
- Improved Shaping of canals with sequential combination of 4% and 6% taper files



Non cutting Tip



Sharp Cutting Edge

FLEXIBILITY at its best



clinical case studies

by Dr. Nilesh Rath (India)

by Dr. Shaymaa Moustafa (Egypt)

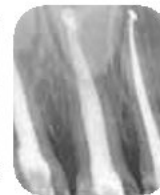
Case 1:

Case 2:

Case 3:

Case 4:

Pre-operative



about e-IodoCal

Premixed Calcium hydroxide paste containing iodoform with improved radiopacity and antimicrobial effect.



Indications

Permanent root canal filling material for primary teeth

Temporary filling material for infected root canals

Stimulates apexification and apexogenesis

Treatment of root resorption.



Preventive Orthodontics



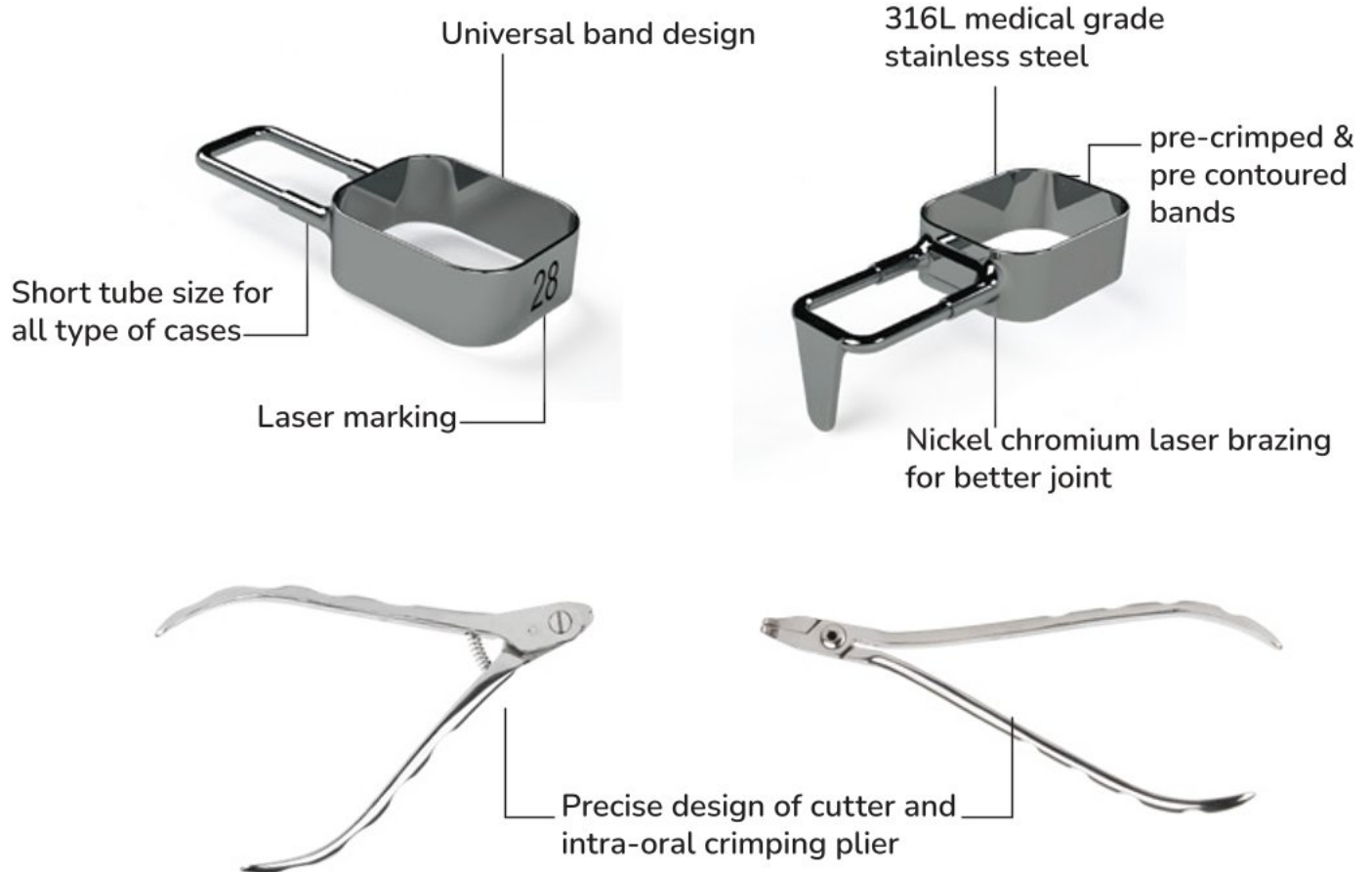
about



-SPACE MAINTAINER™

It is a pre-formed space maintainer used in pediatric dentistry to prevent pre mature loss of space.

FEATURES



advantages

- › Single appointment
- › No impression and model pouring
- › Precise and no laboratory errors involved
- › Universal bands decreases inventory
- › Cost effective
- › Very useful in sedation cases



instruments



e-CUTTER



e-CRIMPER

space maintainer kit



 **e-SPLINT**



 **Kids-e-Dental®**

e-SPLINT

fibre reinforced
esthetic splint

about e-SPLINT

e-splint is esthetic fiber material. Medical grade polyethylene fibers are weaved into tight structural threads.



Composition: Polyethylene Fiber

features

01

Multidirectional
Reinforecment

02

Easy to Use
and Manage

03

High Fracture
Toughness

04

High Resin
Permeability

INDICATIONS

-  Periodontal splinting for mobile teeth
-  Stabilization of teeth after trauma
-  Provisional bridges
-  Endodontic post and core
-  Esthetic space maintainer for primary teeth
-  Reinforcement of large restorations

Dealer Network



Kids--Dental®

 India

 Vietnam

 Egypt

 USA

 Bangladesh

 Kenya

 Muscat

 South Africa

 Ghana

 Kuwait

 Philippines

 Thailand

 Libya

 Indonesia

 Nepal

Impacting lives and dental health globally



doctor's review



Dr Meenakshi Kher 
Owner, Happy tooth Clinic For Kids, India

Freedom for our little patients from demanding, aggressive dental procedures and freedom for us from the stress & fatigue! With the right case selection, SDF allows for evidence based, child friendly, minimally invasive dentistry. My practice would be incomplete without eSDF! Thanks for bringing the best of dentistry to our doorsteps!



Dr. Yasmin Kottait 
Owner of Dr. Yasmin Kottait Clinic, Dubai

"e-SDF is a magical liquid for pediatric dentistry and very useful for un-cooperative and special children. It is a gold standard and highly effective agent for non-invasive dentistry."



Dr. Ngoc Vo Truong Nhu 
Head of Department of Pediatric Dentistry, School of Dentistry, Hanoi Medical University, Vietnam

"Kids-e-Dental products have been commonly used by dentists in Vietnam due to their great compatibility and improved quality. Being products that were well-studied and produced by a pediatric dentist and scientist, Kids-e-Dental inventions are trustworthy and should be in the must-have materials at all clinics."



Dr. Dia Mohamed, Libya 
Pediatric Dentistry
Zirconia Dental Clinic, Fluoride Dental Clinic, Emetiq Hospital, Libya
Kids-e-Dental products are accurate, comfortable and beautiful
I recommend it to all pediatric dentists.

Our Products

Kids-e-Crown®
"The Smart Crown"



Biofix
Crown
By Kids-e-Dental



e-SPACE MAINTAINER™
Preformed Space Maintainer



e-MTA
Mineral Trioxide Aggregate



e-MTA Carrier



e-SDF
38% Silver Diamine Fluoride



e-SPLINT
Esthetic fiber reinforced splint



PRO AF BABY GOLD
Pediatric Rotary Files



e-MTA Putty
Pre-mixed Mineral Trioxide Aggregate



e-MTA Sealer
Bioceramic Sealer



e-IodoCal
Calcium Hydroxide Paste With Iodoform



Kids-e-Dental®

📍 411, Akruiti Arcade, J.P. Road, Opp. A.H. Wadia School, Near Andheri Sports Complex, Andheri (W), Mumbai, Maharashtra - 400053
🌐 www.kidsedental.com

☎ + 917506038332
✉ enquiry@kids-e-dental.com
📘 kidsedental
📷 kids.e.dental